

## CHB-1 无油润滑轴承 Oilless Bushing

### ◎ CHB-1P 往复运动轴承/Reciprocating Motion Bushing

该产品与CHB-1具有相同结构，是根据往复运动的特殊工况条件而设计的特殊配方产品，具有断油条件下润滑能力强，耐磨性能好，保持油膜的特点。产品广泛应用于汽车减震器、摩托车减震器、液压马达、气动元件等，其性能与国外DD2相似。

CHB-1P Carbon Steel Pb-free self-lubricating bearing has the same structure as CHB-1, particularly suitable for intermittent operation, reciprocating or oscillating movements. Characterized by good lubrication and wear performance in the conditions of dry operation of oil. It is applied to shock absorber of automobile, motorcycles and various hydraulic motors and pneumatic elements etc.

#### 技术参数: Technical Data

性能指标 Performance index		数据 Data
最大承载 P Max Load Capacity	静载 Static load	250N/mm <sup>2</sup>
	动载 Dynamic load	140N/mm <sup>2</sup>
最高线速度 V Max Sliding Speed	干摩擦 Dry friction	2.5m/s
	油润滑 Oil lubrication	5.0m/s
最高PV值 Max PV Value Limit	干摩擦 Dry friction	3.6N/mm <sup>2</sup> · m/s
	油润滑 Oil lubrication	50N/mm <sup>2</sup> · m/s
摩擦系数 μ Friction coefficient		0.04 ~ 0.20
使用温度 Working temperature		-195°C ~ +280°C
导热系数 Thermal conductivity		42W/m · K

### ◎ CHB-1B 铜基无给油轴承/Bronze Based Bushing

该产品以特殊配方铜合金为基体，中间烧结球形青铜层，表面轧制聚四氟乙烯和亲油性纤维的混合物。它具有较好的自润滑、耐磨损、摩擦系数低、耐腐蚀等性能，产品广泛应用于冶金机械、连铸轧机、水泥灌浆机械、螺旋式输送机。

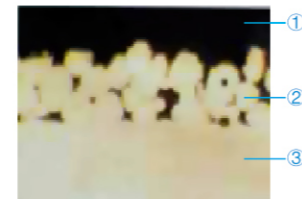
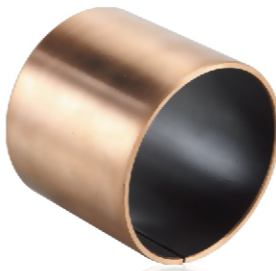
CHB-1B Bronze Pb-free self-lubricating bearing used bronze alloy as base with special formulation, sintered porous bronze as its interlayer and the Compound of PTFE and lipophilicity fiber as its surface. It offers the property of good self-lubricating, low wear, low friction, corrosion resistance. It has been widely applied to metallurgy steel machinery, joined casting machinery, cement grout pump and spiral conveyor machinery etc.

#### 技术参数: Technical Data

性能指标 Performance index		数据 Data
最大承载 P Max Load Capacity	静载 Static load	140N/mm <sup>2</sup>
	动载 Dynamic load	140N/mm <sup>2</sup>
最高线速度 V Max Sliding Speed	干摩擦 Dry friction	2.5m/s
	油润滑 Oil lubrication	5.0m/s
最高PV值 Max PV Value Limit	干摩擦 Dry friction	3.6N/mm <sup>2</sup> · m/s
	油润滑 Oil lubrication	50N/mm <sup>2</sup> · m/s
摩擦系数 μ Friction coefficient	干摩擦 Dry friction	0.03 ~ 0.08
	油润滑 Oil lubrication	0.02 ~ 0.07
使用温度 Working temperature		-195°C ~ +300°C
导热系数 Thermal conductivity		70W/m · K
热膨胀系数 Coefficient of thermal expansion		17 × 10 <sup>-6</sup> /K



1. 聚四氟乙烯与铅的混合物
2. 球形青铜粉
3. 钢背
4. 电镀层 (铜或锡)



1. 聚四氟乙烯与铅及其他填充混合物
2. 球形青铜粉
3. 钢背

## CHB-1 无油润滑轴承 Oilless Bushing

### ◎ CHB-1D 液压专用轴承/Hydraulic Bushing

该产品与CHB-1具有相同结构，是液压专用轴承，是结合油缸及减震器的工作原理而设计的特殊配方产品。它具有CHB-1优点外，特别适用于往复频繁的大侧向力场合，产品适用于汽车减震器、摩托车减震器以及各种液压油缸等。

CHB-1D has the same structure with CHB-1, particularly suitable for hydraulic pump. It is a special formula designed by combining oil cylinder with the working principle of bumpers. Besides the advantages of CHB-1P, it is particularly applicable for the situation of great cross range force of frequent to-and-fro. It is applicable for automobile shock absorbers, motorcycle bumper and various hydraulic pressure cylinders etc.

#### 技术参数: Technical Data

性能指标 Performance index		数据 Data
最大承载 P Max Load Capacity	静载 Static load	250N/mm <sup>2</sup>
	动载 Dynamic load	140N/mm <sup>2</sup>
最高线速度 V Max Sliding Speed	干摩擦 Dry friction	2.5m/s
	油润滑 Oil lubrication	5.0m/s
最高PV值 Max PV Value Limit	干摩擦 Dry friction	3.8N/mm <sup>2</sup> · m/s
	油润滑 Oil lubrication	50N/mm <sup>2</sup> · m/s
摩擦系数 μ Friction coefficient		0.04 ~ 0.20
使用温度 Working temperature		-195°C ~ +280°C
导热系数 Thermal conductivity		42W/m · K

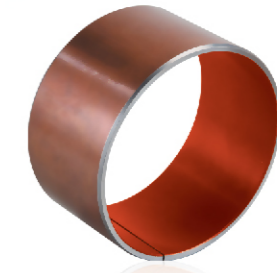
### ◎ CHB-1S 不锈钢耐腐蚀轴承/Stainless Steel Bushing

该产品以不锈钢为基体，中间烧结球形青铜层，表面轧制聚四氟乙烯和铅的混合物。它具有较好的自润滑、耐磨损、摩擦系数低、耐腐蚀等性能。产品广泛应用于印染机械、化工机械、海洋工业耐腐蚀部位等。

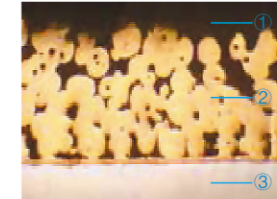
CHB-1S Stainless steel self-lubricating bearing uses stainless steel as base, sintered porous bronze as its interlayer and the Compound of PTFE and Lead as its surface. It offers the property of good self-lubrication, low wear, low friction, corrosion resistance. It has been widely applied to dyeing machinery, chemical engineering machinery and marine industry etc.

#### 技术参数: Technical Data

性能指标 Performance index		数据 Data
最大承载 P Max Load Capacity	静载 Static load	250N/mm <sup>2</sup>
	动载 Dynamic load	140N/mm <sup>2</sup>
最高线速度 V Max Sliding Speed	干摩擦 Dry friction	2.5m/s
	油润滑 Oil lubrication	5.0m/s
最高PV值 Max PV Value Limit	干摩擦 Dry friction	3.8N/mm <sup>2</sup> · m/s
	油润滑 Oil lubrication	50N/mm <sup>2</sup> · m/s
摩擦系数 μ Friction coefficient		0.04 ~ 0.20
使用温度 Working temperature		-195°C ~ +280°C
导热系数 Thermal conductivity		50W/m · K



1. 聚四氟乙烯与亲油性纤维混合物
2. 球形青铜粉
3. 钢背
4. 电镀层 (铜或锡)



1. 聚四氟乙烯与亲油性纤维混合物
2. 球形青铜粉
3. 不锈钢背