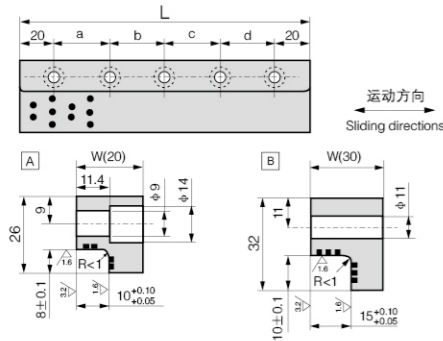


CHB-JSL L型自润滑块 L self-lubrication fast

材质	高力黄铜+石墨
Material	ZCuZn25Al6Fe3Mn3+ Graphite



单位unit:mm

规格 Standard No.	W	L	螺孔位置 Bole Hole				Bolt		Type
			a	b	c	d	螺栓 Size	数量 Number	
JSL-20x 100		100	60	—	—	—		2	A
JSL-20x 150	20	150	55	55	—	—	M8	3	
JSL-20x 200		200	55	50	55	—		4	
JSL-30x 100		100	60	—	—	—		2	B
JSL-30x 150	30	150	55	55	—	—		3	
JSL-30x 200		200	55	50	55	—		4	
JSL-30x 250		250	70	70	70	—		4	C
JSL-45x 200		200	55	50	55	—	M10	4	
JSL-45x 250	45	250	70	70	70	—		4	
JSL-45x 300		300	65	65	65	65		5	
JSL-45x 350		350	80	75	75	80		5	

Catalog No. — W — L
CHB-JSL — 20 — 100

钢基自润滑导板物理性能

Steel substrate physical properties of self-lubricating guides

润滑剂种类 Lubricant type	给油条件 Oil supply conditions	环境条件 Environmental conditions	最大承载 P (N/mm ²) Max Load Capacity	最高线速度 V (m/min) Max Sliding Speed	最高PV值 (N/mm ² ·m/s) Max PV Value Limit	使用温度(°C) Working temperature
固体润滑剂 GR-1	干摩擦 Dry friction	大气中 The atmosphere	100	15	150	-50~+300
	油润滑 Oil lubrication			30	200	-50~+150

密度 (g/cm ³) Density	硬度 (HB) Hardness	延伸率 (%) Elongation	屈服强度(N/mm ²) Yield strength	线膨胀系数 (×10 ⁻⁶ /°C) Coefficient of linear expansion
8	>210	>12	>755	1.9

CHB-1 无油润滑轴承 Oilless Bushing

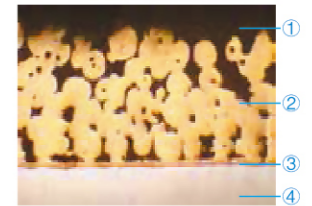
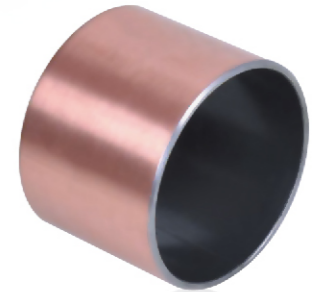
◎ CHB-1 无油润滑轴承/Oilless Bushing

该产品以优质低碳钢为基体，中间烧结球形青铜层，表面轧制改性聚四氟乙烯 (PTFE) 和铅的混合物。它具有较好的自润滑、耐磨损、摩擦系数低、走合性能好、低噪音等性能，产品广泛应用于各种机械的滑动部位，如纺织机、印刷机、液压搬运车、烟草机、健身器、农业机械等。

CHB-1 Carbon Steel self-lubricating bearings used high quality low-carbon steel plate as base, sintered porous bronze as its interlayer and the Compound of PTFE and Lead as its surface. It offers the property of good self-lubrication, low wear, low friction good sliding characteristics, low noise. It has been widely applied to various mechanical sliding positions, such as textile machinery, printing machinery, hydraulic pressure transit vehicle, tobacco machinery, gymnastic instrument and agricultural machinery etc.

技术参数: Technical Data

性能指标 Performance index		数据 Data
最大承载 P Max Load Capacity	静载 Static load	250N/mm ²
	动载 Dynamic load	140N/mm ²
最高线速度 V Max Sliding Speed	干摩擦 Dry friction	2.5m/s
	油润滑 Oil lubrication	5.0m/s
最高PV值 Max PV Value Limit	干摩擦 Dry friction	3.6N/mm ² ·m/s
	油润滑 Oil lubrication	50N/mm ² ·m/s
摩擦系数 μ Friction coefficient	干摩擦 Dry friction	0.04~0.20
	油润滑 Oil lubrication	0.02~0.07
使用温度 Working temperature		-195°C ~ +280°C
导热系数 Thermal conductivity		42W/m·K
热膨胀系数 Coefficient of thermal expansion		11 × 10 ⁻⁶ /K



1. 聚四氟乙烯与铅的混合物
2. 球形青铜粉
3. 钢背
4. 电镀层 (铜或锡)

◎ CHB-1T 齿轮泵专用轴承/Gear Pump Bushing

该产品与CHB-1具有相同结构，是齿轮油泵专用轴承。根据齿轮油泵的高PV值条件而设计的特殊配方产品。它具有摩擦系数小而稳定，耐磨性能好，抗冲击的特点，产品广泛应用于齿轮油泵、柱塞泵、叶片泵等。

CHB-1 Carbon Steel self-lubricating bearing (Gear pump) has the same structure as CHB-1, it is special for gear pump. It is a special formula product devised by high PV value operational mode conditions of gearoil pump. Characterized by low friction factor, stability, well wearing performance and impact resistance, it has been widely applied to gear pumps, radial piston pumps and vane pumps etc.

技术参数: Technical Data

性能指标 Performance index		数据 Data
最大承载 P Max Load Capacity	静载 Static load	250N/mm ²
	动载 Dynamic load	140N/mm ²
最高线速度 V Max Sliding Speed	干摩擦 Dry friction	2.5m/s
	油润滑 Oil lubrication	10m/s
最高PV值 Max PV Value Limit	干摩擦 Dry friction	4.2N/mm ² ·m/s
	油润滑 Oil lubrication	60N/mm ² ·m/s
摩擦系数 μ Friction coefficient		0.03~0.18
使用温度 Working temperature		-195°C ~ +280°C
导热系数 Thermal conductivity		42W/m·K



1. 聚四氟乙烯与铅及其他填充混合物
2. 球形青铜粉
3. 钢背
4. 电镀层 (铜或锡)